



ACCEL® Access

3-Piece Introducer System with TrueGlide™ Hydrophilic Coating

For Percutaneous Introduction and Placement of Catheters and Guidewires

For Vascular and Nonvascular Applications

ACCEL[®] Access

3-Piece Introducer System with TrueGlide[™] Hydrophilic Coating

The ACCEL[®] Access Introducer consists of an inner stiffening stylet, dilator, and sheath. The stiffening stylet and dilator assembly accepts an 0.018" guidewire. The entire length of the Introducer sheath is radiopaque and contains a radiopaque (RO) marker band at the distal tip. The sheath tip inner diameter can accommodate a ≤ 0.038 " guidewire and 0.018" guidewire simultaneously. The Introducer sheath contains TrueGlide[™] hydrophilic coating to facilitate ease of placement.

Secure luer locking stiffening stylet and dilator assembly enhances device stability and targeted access

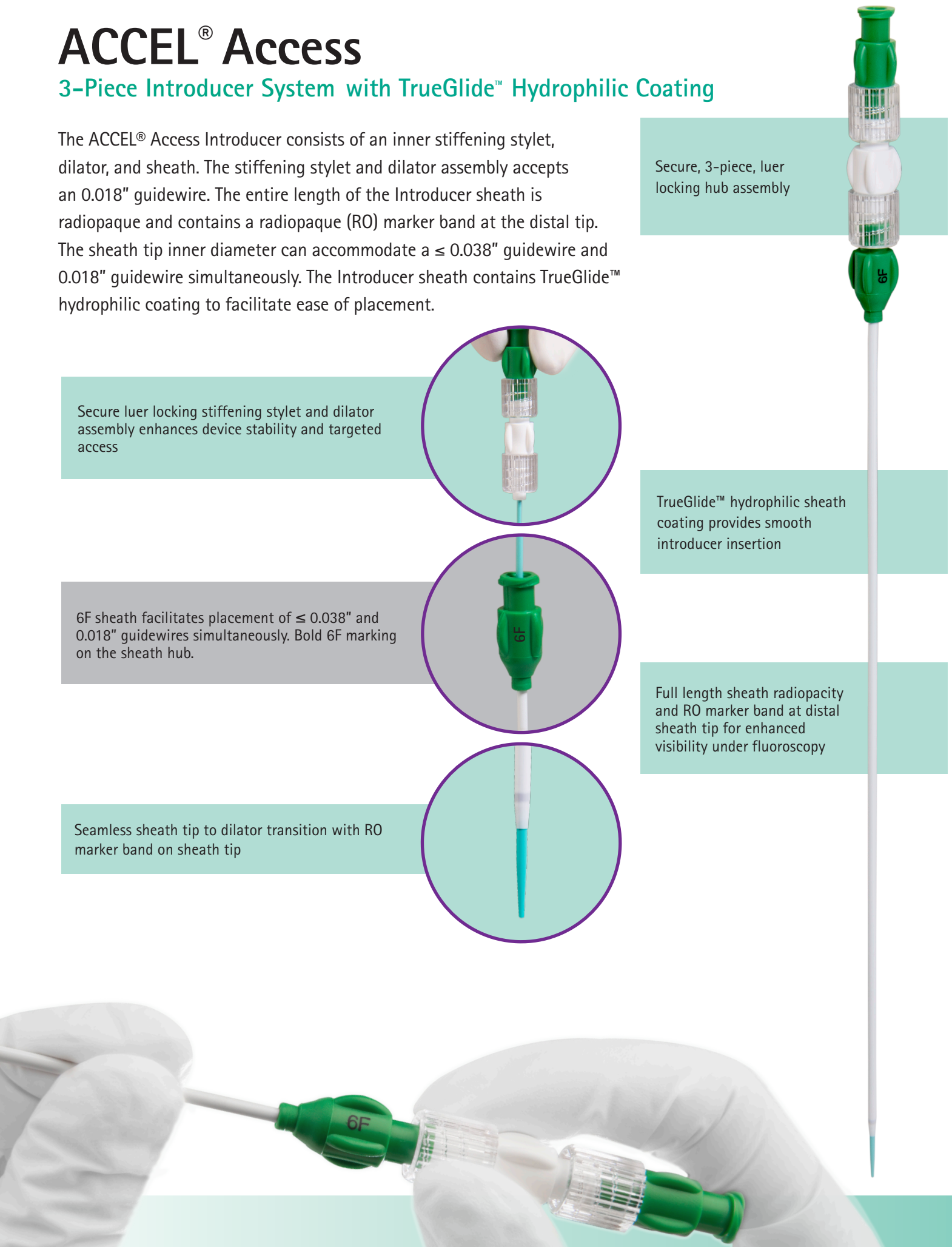
6F sheath facilitates placement of ≤ 0.038 " and 0.018" guidewires simultaneously. Bold 6F marking on the sheath hub.

Seamless sheath tip to dilator transition with RO marker band on sheath tip

Secure, 3-piece, luer locking hub assembly

TrueGlide[™] hydrophilic sheath coating provides smooth introducer insertion

Full length sheath radiopacity and RO marker band at distal sheath tip for enhanced visibility under fluoroscopy



Trocar and Chiba Introducer Needle

The Introducer needles are composed of three components: a needle cannula with depth markings, stylet, and needle depth stop. The introducer needle provides an access path into the target anatomy for placement of 0.018" guidewire.

Single Trocar or Chiba Introducer Needle with Depth Markings

Reference Number	Needle Type	Needle Gauge	Needle Length	Needle Tip	Case Qty.
612130	Trocar	21Ga	15cm	Echogenic	5
612131	Chiba	22Ga	15cm	Echogenic	5
612132	Chiba	22Ga	20cm	Echogenic	5

Recommended Guidewire: 0.018" Diameter

~~PVC~~
Not made with PVC

~~DEHP~~
Not made with DEHP

~~LATEX~~
Not made with natural rubber latex

Vascular Guidewires

Guidewires are intended for use in percutaneous procedures to introduce and position catheters and other interventional devices within the coronary and peripheral vasculature.

Single Guidewire

Reference Number	GW Diameter	GW Length	GW Material	GW Tip	Case Qty.
612133	0.018"	60cm	SS Mandrel	AU Coil Fixed Straight	10
612135	0.018"	60cm	NT Mandrel	AU Coil Fixed Straight	10

LEGEND - Guidewire Material

SS = *Stainless Steel*

NT = *Nitinol*

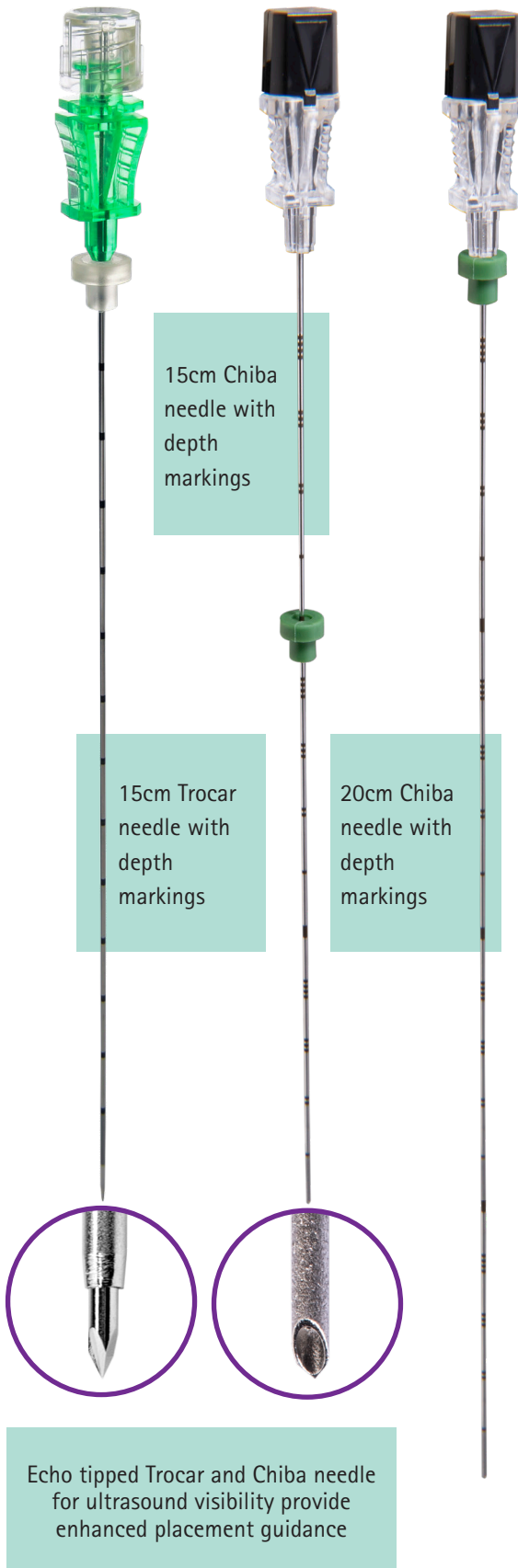
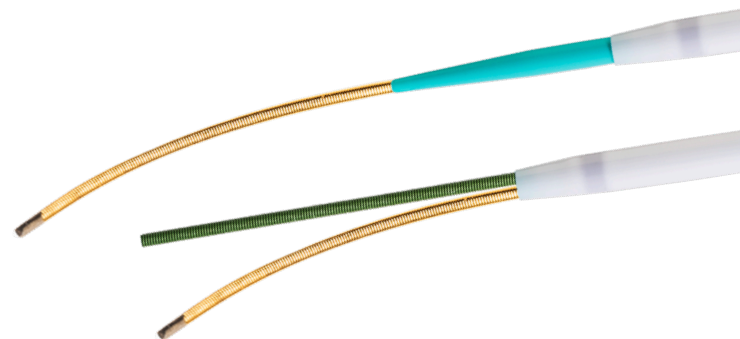
AU = *Gold*

~~PVC~~
Not made with PVC

~~DEHP~~
Not made with DEHP

~~LATEX~~
Not made with natural rubber latex

~~BPA~~
Not made with bisphenol A



ACCEL® Access 3-Piece Introducer with TrueGlide™ Hydrophilic Coating

Reference Number	ITEM	Introducer Size	Introducer Length	Case Qty.
612137	ACCEL® Access 3-Piece Introducer System with TrueGlide™ Hydrophilic Coating	6F	20cm	10
<div> <div>PVC Not made with PVC</div> <div>DEHP Not made with DEHP</div> <div>LATEX Not made with natural rubber latex</div> </div>				

ACCEL® Access 3-Piece Introducer with Trocar or Chiba Needle Set

Reference Number	Introducer Size	Introducer Length	Needle Type	Needle Gauge	Needle Length	Needle Tip	Case Qty.
612144	6F	20cm	Chiba	22Ga	15cm	Echogenic	10
612145	6F	20cm	Trocar	21Ga	15cm	Echogenic	10
<div> <div>PVC Not made with PVC</div> <div>DEHP Not made with DEHP</div> <div>LATEX Not made with natural rubber latex</div> </div>							

ACCEL® Access 3-Piece Introducer with Trocar Needle and Guidewire Set

Reference Number	Introducer Size	Introducer Length	Needle Type	Needle Gauge	Needle Length	Needle Tip	GW Diameter	GW Length	GW Material	GW Tip	Case Qty.
612138	6F	20cm	Trocar	21Ga	15cm	Echogenic	0.018"	60cm	NT Mandrel	AU Coil	10
612139	6F	20cm	Trocar	21Ga	15cm	Echogenic	0.018" 0.038"	60cm 145cm	SS Mandrel PTFE	AU Coil 3mm J-Straight	5
612140	6F	20cm	Trocar	21Ga	15cm	Echogenic	0.018" 0.038"	60cm 145cm	NT Mandrel PTFE	AU Coil 3mm J-Straight	5
612141	6F	20cm	Trocar	21Ga	15cm	Echogenic	0.018"	60cm	SS Mandrel	AU Coil	10
<div> <div>PVC Not made with PVC</div> <div>DEHP Not made with DEHP</div> <div>LATEX Not made with natural rubber latex</div> </div>											

ACCEL® Access 3-Piece Introducer with Chiba Needle and Guidewire Set

Reference Number	Introducer Size	Introducer Length	Needle Type	Needle Gauge	Needle Length	Needle Tip	GW Diameter	GW Length	GW Material	GW Tip	Case Qty.
612142	6F	20cm	Chiba	22Ga	15cm	Echogenic	0.018"	60cm	NT Mandrel	AU Coil	10
612143	6F	20cm	Chiba	22Ga	15cm	Echogenic	0.018"	60cm	SS Mandrel	AU Coil	10
<div> <div>PVC Not made with PVC</div> <div>DEHP Not made with DEHP</div> <div>LATEX Not made with natural rubber latex</div> </div>											

LEGEND – Guidewire Material

SS = *Stainless Steel*

NT = *Nitinol*

AU = *Gold*

Indications For Use:

The ACCEL® 3-Piece Introducer System is indicated for use in percutaneous introduction and placement of catheters and guidewires.

Trocar and Chiba Introducer needles are used for percutaneous introduction of guidewires.

Guidewires are intended for use in percutaneous procedures to introduce and position catheters and other interventional devices within the coronary and peripheral vasculature.

Refer to Instructions for Use for relevant warnings, precautions, complications, and contraindications.

Distributed by:

B. Braun Interventional Systems Inc. | Part of the B. Braun Group of Companies

824 Twelfth Avenue | Bethlehem, PA 18018 | USA

Tel 877-836-2228 | Fax 610-849-1334 | www.bisusa.org

Rx only

©2019 B. Braun Interventional Systems Inc.

ACCEL is a registered trademark of B. Braun Interventional Systems

TrueGlide is a trademark of B. Braun Interventional Systems

CV-2071 4/19

