

Covered Mounted CP StentTM

COARCTATION OF THE AORTA AND RIGHT VENTRICULAR OUTFLOW TRACT

INSTRUCTIONS FOR USE

General Instructions.....	Page 2
Coarctation Indication.....	Page 4
Right Ventricular Outflow Tract Indication.....	Page 23
Stent Sizing Charts and Information.....	Page 33

**CAUTION: FEDERAL (USA) LAW RESTRICTS THIS DEVICE TO
SALE BY OR ON THE ORDER OF A PHYSICIAN.**

Read all instructions prior to use.

Interventional Systems
B | BRAUN

Distributed by:

B. Braun Interventional Systems Inc.

824 Twelfth Avenue

Bethlehem, PA 18018

Customer Service:

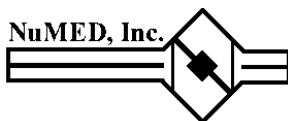
TEL: (877) 836-2228

FAX: (610) 849-1334

Technical Support

TEL: (800) 443-8362

Made in U.S.A.



Manufactured by:

NuMED, Inc.

2880 Main Street

Hopkinton, NY

USA 12965

Telephone: (315) 328-4491

Facsimile: (315) 328-4941

Email: info@numedusa.com

Internet: www.numedforchildren.com

DESCRIPTION

The Covered CP Stent is balloon expandable and intended for permanent implant. The Covered CP Stent is composed of heat treated 90% platinum and 10% iridium wire that is arranged in laser welded rows with a “zig” pattern. The number of zigs in a row can be varied and will impact the strength of the stent as well as the eventual expanded diameter and percentage of stent shortening, while the number of rows will determine the unexpanded length of the stent. The Covered CP Stent has an ePTFE covering attached to the stent framework. This covering acts as a fluid barrier creating a fluid tight conduit through the stent length.

The NuMED BIB[®] (Balloon in Balloon) Catheter is a triaxial design catheter. Two lumens are used to inflate the balloon while one lumen is for tracking over a guidewire. The radiopaque platinum marker(s) are placed beneath the “working area” of the balloon. The inner balloon is ½ of the outer balloon diameter and 1 cm shorter. Each balloon inflates to the stated diameter and length at specific pressure. The balloon size is ±10% at Rated Burst Pressure (RBP). The RBP is different for each size. Check the package label for the RBP. It is important that the balloon not be inflated beyond the RBP.

The purpose of the double balloon catheter is to apply an incremental inflation for the purpose of opening a vascular channel using a balloon expandable intravascular stent. The inner balloon provides initial expansion of the stent and also acts as a tool to hold the stent in place while the outer balloon is inflated. The outer balloon is then inflated securing the stent against the vessel wall.

HOW SUPPLIED

Supplied sterilized by ethylene oxide gas. Sterile and non-pyrogenic if package is unopened or undamaged. Do not use the product if there is doubt as to whether the product is sterile. Avoid extended exposure to light. Upon removal from package, inspect the product to ensure no damage has occurred.



MRI SAFETY INFORMATION

Nonclinical testing and modeling has demonstrated that the CP Stent is MR Conditional. A patient with this device can be safely scanned in an MR system meeting the following conditions:

- Static magnetic field of 1.5 T and 3 T
- Maximum spatial gradient magnetic field of 2500 gauss/cm (25 T/m)
- Maximum MR system reported, whole body averaged specific absorption rate (SAR) of 2.0 W/kg for 15 minutes of scanning (Normal Operating Mode)

Based on nonclinical testing and modeling, under the scan conditions defined above, the CP Stent is expected to produce a maximum in vivo temperature rise of less than 2°C after 15 minutes of continuous scanning.

MR image quality may be compromised if the area of interest is in the same area, or relatively close to the position of the device. In nonclinical testing, the image artifact caused by the device extends approximately 3 mm from the CP Stent when imaged with a spin echo pulse sequence and 6 mm when imaged with a gradient echo pulse sequence and a 3 T MRI System. The lumen of the device was obscured.

The presence of other implants or medical circumstances of the patient may require lower limits on some or all of the above parameters.

WARNING: Radiofrequency heating during MRI scans on overlapped, 10 zig CP Stents has not been evaluated.

INSTRUCTIONS FOR USE:

Select Stent Size

1. Measure the length of the target stricture to determine the length of stent required. Size the stent length to extend slightly proximal and distal to the stricture.
2. The appropriate stent length should be selected based on covering the entire obstructed segment with a single stent.
Note: Should more than one stent be required, place the stent most distal from the puncture site first, followed by placement of the proximal stent in tandem.
3. Measure the diameter of the reference stricture and vessel proximal and distal to the target lesion to determine the appropriate size stent and delivery system.

Preparation of Stent Delivery System

- Visually inspect the balloon/stent assembly to assure proper placement of the stent.

Stent Deployment

1. **Use of the tools supplied with the stent is necessary to defeat the hemostasis valve without damaging the stent or covering. Once the stent is past the hemostasis valve, the tool must be pulled out of the valve.**
2. The system is advanced through the long delivery sheath and over the stiff guidewire into the desired location for implant.
3. After correct positioning of the stent, pull back on the sheath to expose the stent. Confirm proper stent position by a small injection of contrast through the sidearm of sheath or through a second catheter.
4. Expand the stent initially by inflating the inner balloon until it is fully expanded. One may “reposition” the stent at this point by moving the BIB catheter. The unexpanded outer balloon and expanded inner balloon hold the stent tightly against the BIB catheter. **DO NOT** deflate the inner balloon before expansion of the outer balloon. This could cause the stent to slip off the balloon catheter.
5. Confirm positioning and inflate the outer balloon to rated diameter. Do not exceed the rated burst pressure.

Delivery System Withdrawal

1. Once the stent is expanded, deflate both balloons completely and rotate to ensure the stent is free and properly deployed. If there is a residual waist in the stent, expand only the outer balloon again, making sure not to exceed the rated burst pressure.
2. Remove the balloon catheter and confirm the result with angiography.

NOTE: Diameter of the stent may be increased after placement by expanding with a larger diameter balloon. Do not exceed the maximum recommended expanded stent diameter of 24mm for the 8 zig stents, and 30mm for the 10 zig stents.

COARCTATION INDICATION

The Covered CP Stent is indicated for use in the treatment of native and/or recurrent coarctation of the aorta involving the aortic isthmus or first segment of the descending aorta where there is adequate size and patency of at least one femoral artery associated with one or more of the following:

- acute or chronic aortic wall injury
- nearly atretic descending aorta of 3 mm or less in diameter
- a non-compliant stenotic aortic segment found on pre-stent balloon dilation
- a genetic or congenital syndrome associated with aortic wall weakening or ascending aortic aneurysm

CONTRAINDICATIONS

- Patients too small to allow safe delivery of the stent without compromise to the systemic artery used for delivery;
- Unfavorable aortic anatomy that does not dilate with high pressure balloon angioplasty;
- Curved vasculature;
- Occlusion or obstruction of systemic artery precluding delivery of the stent;
- Clinical or biological signs of infection;
- Active endocarditis;
- Known allergy to aspirin, other antiplatelet agents, or heparin;
- Pregnancy.

CP STENT WARNINGS

- Radiofrequency heating during MRI scans on overlapped, 10 zig CP Stents has not been evaluated.
- Coarctation of the aorta involving the aortic isthmus or first segment of the descending aorta should be confirmed by diagnostic imaging.
- The NuMED CP stent has not been evaluated in patients weighing less than 20kg.
- As with any type of implant, infection secondary to contamination of the stent may lead to aortitis, or abscess.
- Over-stretching of the artery may result in rupture or aneurysm formation.
- Excessive force while crimping may weaken welds of the stent.
- Crimping the 8 zig stent on a balloon catheter smaller than 12mm, and the 10 zig on a balloon catheter smaller than 26mm, may cause damage to the stent.
- Excessive handling and manipulation of the covering while crimping the stent may cause the covering to tear off of the stent.
- Crimping the device in the opposite direction of the folds in the covering may cause the covering to catch while inserting into the hemostasis valve tool and introducer. This could cause the covering to tear off of the stent.
- Pulling the Covered stent back through the introducer and/or hemostasis valve may cause the covering to catch and tear off of the stent.

BIB STENT PLACEMENT WARNINGS

- Do not exceed the RBP. An inflation device with pressure gauge is recommended to monitor pressure. Pressure in excess of the RBP can cause balloon rupture and potential inability to withdraw the catheter through the introducer sheath.
- Confirm that the distal end of the introducing sheath is at least 2.5cm back from the most proximal image band before inflating the outer balloon. Failure to do so may stretch the outer tubing and severely hinder balloon deflation.
- Use two appropriate size inflation devices with pressure gauges for inflation.
- Do not advance the guidewire, balloon catheter, or any other component if resistance is met, without first determining the cause and taking remedial action.
- This catheter is not recommended for pressure measurement or fluid injection.
- Do not remove the guidewire from the catheter at any time during the procedure.
- This device is intended for single use only. Do not resterilize and/or reuse it, as this can potentially result in compromised device performance and increased risk of cross-contamination.

PRECAUTIONS

- Use of an inflation device with pressure gauge is highly recommended during this procedure.
- The stent is rigid and may make negotiation through vessels difficult.
- Dilatation procedures should be conducted under fluoroscopic guidance with appropriate x-ray equipment.
- Guidewires are delicate devices. Care should be exercised while handling to help prevent the possibility of breakage.
- Careful attention must be paid to the maintenance of tight catheter connections and by aspiration before proceeding to avoid air introduction into the system.
- The inflation diameter of the balloon used during stent delivery should approximate the diameter of the obstructive vessel and the intended implant site.
- Under no circumstances should any portion of the catheter system be advanced against resistance. The cause of the resistance should be identified with fluoroscopy and action taken to remedy the problem.
- If resistance is felt upon removal, the balloon, guidewire, and sheath should be removed as a unit, particularly if balloon rupture or leakage is known or suspected. This may be accomplished by firmly grasping the balloon catheter and sheath as a unit and withdrawing both together, using a gentle twisting motion combined with traction.
- Proper functioning of the catheter depends on its integrity. Care should be used when handling the catheter. Damage may result from kinking, stretching, or forceful wiping of the catheter.

POTENTIAL COMPLICATIONS / ADVERSE EFFECTS

NOTE: Circumferential tear of the delivery balloon catheter prior to complete expansion of the stent may cause the balloon to become tethered to the stent, requiring surgical removal. In case of rupture of an adequately sized balloon after stent expansion, it can be withdrawn and a new balloon catheter exchanged over a guidewire to complete expansion of the stent.

Cardiac catheterization carries certain risks. In addition, potential complications, and related adverse effects associated with implants include, but are not limited to:

- Femoral Artery injury, thrombosis or pseudoaneurysm
- Stent Migration
- Stent Fracture
- Aortic Rupture/Tear
- Hematoma
- Thrombosis/Thromboembolism
- Death
- Endocarditis
- Cell necrosis at the site of implant
- Cerebrovascular Incident
- Stent Stenosis
- Aortic Aneurysm/Pseudoaneurysm
- Stent Malposition
- Sepsis/infection
- AV fistula formation
- Transitory arrhythmia
- Bleeding

COAST II CLINICAL STUDY INFORMATION

COAST II was performed to establish a reasonable assurance of safety and effectiveness of implantation of the Covered CP stent in the native and/or recurrent coarctation of the aorta in the US. The study was a prospective, multi-center, single-arm clinical study that evaluates the Covered CP Stent for treatment of coarctation of the aorta. For effectiveness, each patient serves as his or her own control. For safety, a performance goal was derived from surgical literature.

82 patients were included in the COAST II cohort at 19 investigational sites.

1. Clinical Inclusion and Exclusion Criteria

Enrollment in the COAST II study was limited to patients who met the following inclusion criteria:

Native or recurrent aortic coarctation*associated with one or more of the following:

1. Acute or chronic aortic wall injury**
2. Nearly atretic descending aorta to 3 mm or less in diameter.
3. Genetic Syndromes associated with aortic wall weakening. Individuals with genetic syndromes such as Marfan Syndrome, Turner's Syndrome or familial bicuspid aortic valve and ascending aortic aneurysm.
4. Advanced age. Men and woman aged 60 years or older.

** The significance of aortic obstruction is left to the judgment of the participating investigator. Indications might include mild resting aortic obstruction associated with:*

- Exercise related upper extremity hypertension;
- Severe coarctation with multiple and/or large arterial collaterals;
- Single ventricle physiology
- Left ventricular dysfunction
- Ascending aortic aneurysm

****Aortic wall injury might include:**

- *Descending aortic aneurysm*
- *Descending aortic pseudo-aneurysm*
- *Contained aortic wall rupture*
- *Non-contained rupture of the aortic wall*

Patients were not permitted to enroll in the COAST II study if they met any of the following exclusion criteria:

- a. Patient size too small for safe delivery of the device. The absolute lower limit for inclusion under this protocol is 20 kg. However, serious femoral artery injury can occur in small patients, particularly those in the 20-30 kg range and this risk must be reviewed in detail with parents or guardians of children in this weight range.
- b. Planned deployment diameter less than 10 mm or greater than 22 mm
- c. Location requiring covered stent placement across a carotid artery*
- d. Adults lacking capacity to consent
- e. Pregnancy
**crossing or covering of a subclavian artery is acceptable in certain situations, but only after alternative treatments have been considered.*

2. Follow-up Schedule

All patients were scheduled to return for follow-up examinations at 1 month, 6 months, 12 months, 24 months, and annually thereafter to 5 years. Adverse events and complications were recorded at all visits.

3. Clinical Endpoints

With regards to safety, the following criteria were evaluated.

Primary Safety Endpoint: Occurrence of any serious or somewhat serious adverse event attributed to the stent or implantation procedure within 30 days of the catheterization procedure.

The following hypothesis was tested using a one-sample, one-sided test of proportions conducted at the 0.05 level of significance:

$$H_0: p \geq 0.18 \text{ vs. } H_A: p < 0.18$$

Secondary Safety Endpoint: Proportion of patients experiencing any of the following adverse events related to the device or implant procedure post 1 year

- Underlying cardiac or non-cardiac disease, aortic wall injury, new aortic aneurysm formation within region of device, stent misplacement, malposition, stent fracture, aortic wall aneurysms, or restenosis requiring reintervention.

With regards to effectiveness, the following criteria were evaluated.

Primary Effectiveness Endpoint #1: Improvement of aortic wall injury and/or aortic arch obstruction by a median increase of at least one grade from pre-implantation baseline to 12 month follow-up using the Severity of Illness Scale (based on upper extremity (UE) systolic BP, UE to lower extremity (LE) systolic BP, and aortic wall injury).

The following hypothesis was tested using a one-sided Wilcoxon signed-rank test conducted at the 0.025 level of significance:

H_0 : median change in grade ≤ 0 vs. H_A : median change in grade > 0

Primary Effectiveness Endpoint #2: Aortic wall injury and aortic arch obstruction at Grade 4 or above at the 12 month follow-up, based on the Severity of Illness Scale, with no clinical worsening.

The following hypothesis was tested using a one-sample, one-sided test of proportions conducted at the 0.05 level of significance:

H_0 : $p \leq 0.70$ vs. H_A : $p > 0.70$

Secondary Effectiveness Endpoints:

- Reduction of arm-leg systolic blood pressure gradients to less than 20mmHg and less than 15 mmHg.
- Reduction of upper extremity blood pressure at 1 year compared to baseline
- Repair of wall defect with <10% residual endoleak on MRI or CT in patients with aortic wall injury
- Hospital length of stay compared to length of stay for surgical repair of aortic coarctation.

82 patients were enrolled in COAST II and study accountability is detailed in Table 1.

Table 1: COAST II Accountability

COAST II Patients	Possible n (100%)	1 Month Visit n (%)	12 Month Visit n (%)	24 Month Visit n (%)	3 years Visit n (%)	4 years Visit n (%)	5 years Visit n (%)
Safety Cohort	82	82 (100%)	69 (84%)	67 (81.7%)	55 (67.1%)	38 (46.3%)	22 (26.8%)
Effectiveness Cohort	82	82 (100%)	68 (83%)	66 (80.5%)	54 (65.8%)	37 (45.1%)	21 (25.6%)

Subject Demographics

Table 2 presents subject demographics and baseline characteristics analyzed for the enrolled subjects. The study population consisted of 52 male and 30 female subjects with a mean age of 18 (range 6 to 67 years).

Table 2: COAST II Pivotal Cohort – Patient Characteristics

Assessment	Number (Percent) or Median (Range)		
	Prospective (n=29)	Legacy (n=53)	Total (n=82)
Gender			
Male	21 (72%)	31 (58%)	52 (63%)
Female	8 (28%)	22 (42%)	30 (37%)
Age, years	20 (6 to 67)	17 (6 to 66)	18 (6 to 67)
Primary Indication			
Repair of aortic wall injury	15 (52%)	34 (64%)	49 (60%)
Prevention of aortic wall injury ¹	14 (48%)	19 (36%)	33 (40%)

¹ Includes 1 patient classified as not having pre-existing aortic wall injury, who was noted to have a small, localized intimal tear with a diameter of < ¼ the aortic diameter.

The analysis of safety was based on the implanted cohort of 82 COAST II patients completing their implant procedures. The primary safety outcomes are presented in Table 3.

Table 3. Summary of COAST II Outcomes and Pre-Specified Safety Endpoints

COAST II	Safety Endpoint	Event Rate (CI)	P Value
Primary	Serious or Somewhat Serious Adverse Events Attributed to the Stent, Implantation or Catheterization within 30 days of the procedure (includes data from COAST combined with COAST II)	8.2% (5.2%, 12.3%)*	<0.001
Secondary	Proportion of patients experiencing any AEs related to the device or implant procedure post 1 year (among 74 patients followed for at least 1 year)	6.8% (2.2%, 15.1%)#	N/A

*90% Confidence interval

Confidence interval is not adjusted for multiplicity and is provided to illustrate the variability only. No statistical conclusion should be drawn from this confidence interval.

The COAST II primary safety endpoints were met with the occurrence of any serious or somewhat serious adverse event within 30 days post procedure being less than the predefined 18%. The overall incidence and types of adverse events were within expected ranges. Aortic wall injuries were rare and treated appropriately without the need for emergency surgery. The results are durable out to 60 months for each study and re-coarctation was treated by transcatheter means when it occurred. Table 4 provides a summary of the adverse events reported under COAST II.

Table 4: Summary of Adverse Events (AEs) for COAST II

	Stent Related Events¹ (Rates)	Stent, Implantation, or Catheterization Related Events² (Rates)	All Events (Rates)
Patients with adverse events at 30 days	2 (2.4%)	27 (32.9%)	42 (51.2%)
Serious or somewhat serious events at 30 days	1 (1.2%)	6 (7.3%)	7 (8.5%)
Serious or somewhat serious events at 30 days, excluding stent fracture	1 (1.2%)	6 (7.3%)	7 (8.5%)
Serious event at 30 days	0 (0.0%)	1 (1.2%)	1 (1.2%)
Patients with adverse events at 12 Months	4 (4.9%)	30 (36.6%)	58 (70.7%)
Serious or somewhat serious events at 12 months	3 (3.7%)	7 (8.5%)	14 (17.1%)
Serious or somewhat serious events at 12 months, excluding stent fracture	3 (3.7%)	7 (8.5%)	14 (17.1%)
Serious event at 12 months	1 (1.2%)	1 (1.2%)	4 (4.9%)
Patients with adverse event at 24 Months	5 (6.1%)	31 (37.8%)	60 (73.2%)

¹Includes events that are due to or possible due to stent, and stent fractures.

²Includes events that are due to or possible due to stent, implantation, or catheterization, and stent fractures

Table 5 presents incidence of stent fractures. There were no stent fractures detected at 12 month fluoroscopy. One stent fracture was detected at 24 month fluoroscopy. There was no loss of structural integrity in the detected fracture.

Table 5: COAST II Pivotal Cohort – Safety Data – Adverse Events – Stent Fracture

	Completed 12 Month Fluoroscopy (n=69) ¹	Completed 24 Month Fluoroscopy (n=65) ²
Percentage of Eligible Subjects Undergoing Fluoroscopy	69/81 ² (85%)	65/80 ⁴ (81%)
Stent Fracture	0 (0.0%)	1 (1.5%)
No loss of structural integrity	0	1
Loss of structural integrity	0	0

¹ Among 81 eligible subjects, excludes: 3 patients lost to follow-up at 6 months and 4 patients lost to follow-up at 12 months. An additional 5 patients did not undergo fluoroscopy at 12 months.

² One patient died prior to 12 month follow-up.

³ Among 80 eligible subjects, excludes: 7 patients previously lost to follow-up, and 2 patients lost to follow-up at 24 months. An additional 6 patients did not undergo fluoroscopy at 24 months.

⁴ In addition to 1 patient who died prior to 12 month follow-up, 1 patient withdrew consent prior to 24 month visit.

Tables 6 through 8 document the stent related, implantation related and catheterization procedure related adverse events in the COAST II trial.

Table 6: Stent Related Adverse Events for COAST II

	Event	n (Event Rate)
COAST II (n =82)	Aortic Aneurysm	2 (2.4 %)
	Asymmetric Stent Shortening	1 (1.2 %)
	Left arm numbness and weakness	1 (1.2 %)

Table 7: Implantation Related Adverse Events for COAST II

	Event	n (Event Rate)
COAST II (n =82)	Aneurysmal formation	1 (1.2 %)
	Chest pain	4 (4.9 %)
	Chest and back pain	1 (1.2 %)
	Easy bruising on aspirin	1 (1.2 %)
	Increased bruising	1 (1.2 %)
	Right groin pain	1 (1.2 %)
	Stent malposition	2 (2.4 %)
	Wound bleeding	1 (1.2 %)

Table 8: Catheterization Related Adverse Events for COAST II

	Event	n (Event Rate)
COAST II (n =82)	Aneurysm	1 (1.2 %)
	Atrial arrhythmia	1 (1.2 %)
	Brachial plexus injury	1 (1.2 %)
	Contact skin rash	1 (1.2 %)
	Corneal abrasion	1 (1.2 %)
	Discomfort right eye	1 (1.2 %)
	Dissection of iliac artery	1 (1.2 %)
	Ecchymosis/groin tenderness	1 (1.2 %)
	Femoral artery occlusion	1 (1.2 %)
	Local hematoma groin	2 (2.4 %)
	Localized groin bruising	1 (1.2 %)
	Minimal bleeding/cough	1 (1.2 %)
	Neck swelling	1 (1.2 %)
	Pulsatile bleeding	1 (1.2 %)
	Right iliac dissection/pulse loss	1 (1.2 %)
Superficial infection of groin	1 (1.2 %)	
Wide complex non-sustained tachycardia	1 (1.2 %)	

There were five patients that crossed over from COAST to COAST II. One patient crossed over due to a small aneurysm after dilation, two patients due to a near atretic aorta, one patient due to localized intimal tear after dilation and one patient due to an acute, rapidly expanding aneurysm after dilation. In the COAST II trial two patients experienced two events, representing 2.4% of patients, and both events were resolved using a second Covered CP stent to fully occlude the aneurysm developed with no permanent damage. In the COAST II trial, three patients experienced aortic wall injuries by the 24 month follow-up. These injuries are detailed in Table 9, below.

Table 9: COAST II Aortic Wall Injuries by 24 Month Follow-up

Date of Catheterization	Date of MRI	Injury Detected	Intervention
11/11/2009	11/16/2011 ¹	Neo-intimal proliferation	Therapy for new aortic wall injury – implantation of Covered CP Stent
2/23/2010	3/31/2011 ¹	Small aneurysm at 12 m visit	Therapy for new aortic wall injury – implantation of Covered CP Stent
4/15/2010	5/12/2011	Small aneurysm at 12 m visit	New Covered CP Stent implanted to occlude aneurysm

¹Aortic wall injury not confirmed by MRI at follow-up visit. Confirmed during reintervention.

In COAST II, six patients experienced coarctation-related events, representing 7.3% of patients with events. These patients underwent catheter reinterventions. No surgical interventions were completed. Table 10 provides a summary of these interventions.

Table 10: COAST II Coarctation-Related Reintervention by 24 months

Approximate Time to Intervention Post-procedure (Months)	Indication for Reintervention	Procedure Performed
7	Persistent hypertension and gradient across aortic arch	Radiation of stent
7	Planned re-expansion of stent	Radiation of stent
9	Planned re-expansion of stent	Radiation of stent
25	Increased gradient with somatic growth; neo-intimal proliferation detected in cath lab	Therapy for new aortic wall injury - implantation of Covered CP Stent
14	Aneurysm detected by MRI at 12 m visit ¹	Therapy for new aortic wall injury - implantation of Covered CP Stent
13	Aneurysm detected by MRI at 12 m visit ¹	Therapy for new aortic wall injury - implantation of Covered CP Stent

¹ Presence of aneurysm in this patient was not confirmed by core laboratory review of the MRI

In COAST II, two patients experienced non-coarctation related reinterventions that were documented by the 24 month follow-up, representing 2.4% of the patients with events. These patients underwent catheter reinterventions. The time to intervention for one patient was four months, when the patient received a coronary angiogram and graft angiogram to address symptoms of angina. The time to intervention for the second patient was 26 months when the Melody valve was implanted to address a high right ventricle to pulmonary artery conduit gradient. The incidence of stent fracture for covered CP stents (COAST II) was much lower and was not observed to substantially increase over time. Also, relief from blood pressure gradient was maintained through 60 month follow-up and re-intervention was rare. When needed, this was accomplished using transcatheter interventions.

The key effectiveness outcomes of COAST II are shown in Table 11 through 12.

Table 11. Summary of Late Outcomes and Major Pre-Specified Effectiveness Study Endpoints

	Effectiveness Endpoint	Event Rate (CI)	P Value
COAST II <i>Primary</i>	Severity of Illness Scale Grade 4 or 5 with No Clinical Worsening at 12 Month Follow-up	80% (70.1%, 87%)*	0.048
COAST II <i>Secondary</i>	Proportion of patients with arm-leg systolic blood pressure differences less than 20mmHg and less than 15 mmHg at 12 month follow-up, compared to baseline	87% (up from 46% at baseline) (76%, 94%)+ 79% (up from 38% at baseline) (68%, 88%)+	N/A
	Reduction of upper extremity blood pressure at 1 year compared to baseline	12 ± 20mmHg§ (7mmHg, 17mmHg)+#	N/A
	Complete repair of aortic wall defect with first Covered CP Stent (no residual endoleak during the catheterization procedure)	47 of 49 (96%) of patients treated for an aortic wall injury	N/A
	Proportion of patients with effective treatment of AWI with no residual aneurysm seen on MRI scanning	37 of 39 (95%) patients treated for an aortic wall injury 1/39 (2.5%) with a small aneurysm and one patient's MRI could not be evaluated by core lab	N/A
	Hospital length of stay compared to length of stay for surgical repair of aortic coarctation	1.2 ± 0.9 days§ (1.0 days, 1.4 days)+	<0.001

*90% Confidence interval

+ 95% Confidence Interval

§ Mean ± standard deviation

Confidence interval is not adjusted for multiplicity and is provided to illustrate the variability only. No statistical conclusion should be drawn from this confidence interval.

Table 12. COAST II Pivotal Cohort – Systolic Blood Pressure

	Number (Percent) or Median (Range) And Mean \pm Standard Deviation	
	Completed 12 Month Follow-up (n=68) ¹	Completed 24 Month Follow-up (n=66) ²
Upper Extremity Systolic Blood Pressure (mmHg)		
Median (range)	123 (98 to 166)	126 (96 to 158)
Mean \pm standard deviation	125 \pm 14	126 \pm 13
Lower Extremity Systolic Blood Pressure (mmHg)		
Median (range)	121 (90 to 199)	124 (86 to 156)
Mean \pm standard deviation	124 \pm 21	125 \pm 16
Systolic Blood Pressure Difference (mmHg)		
Median (range)	2 (-48 to 38)	0 (-35 to 62)
Mean \pm standard deviation	1 \pm 16	1 \pm 17
Systolic Blood Pressure Difference		
< 10 mmHg	46 (68%)	52 (79%)
< 15 mmHg	54 (79%)	56 (85%)
< 20 mmHg	59 (87%)	60 (91%)

¹ Among 81 eligible subjects, excludes: 3 patients lost to follow-up at 6 months and 4 patients lost to follow-up at 12 months. An additional 6 patients missed the 12 month visit.

² Among 80 eligible subjects, excludes: 7 patients previously lost to follow-up, and 2 patients lost to follow-up at 24 months. An additional 5 patients missed the 24 month visit.

Procedural Data

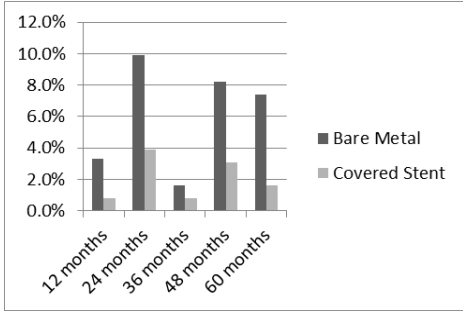
A summary of procedural data of those enrolled patients who underwent cardiac catheterization for the purpose of Coarctation of the Aorta is provided in Table 13.

Table 13: COAST II Pivotal Cohort – Procedural Data

	Number (Percent)
	Total (n=82)
Covered CP Stent Implanted	82 (100%)
Second Covered CP Stent Implanted	9 (11%)
Third Covered CP Stent Implanted	2 (2%)
Patient Free of Explant 24 hours after Procedure	82 (100%)

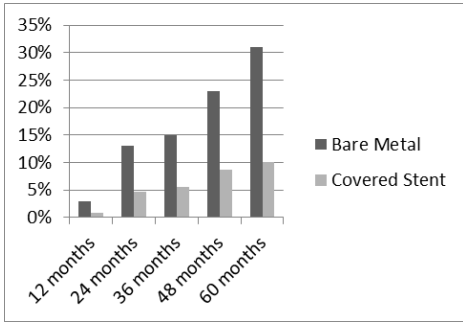
COAST/COAST II Follow-up Data

A.1. Percent of Patients with New Stent Fracture



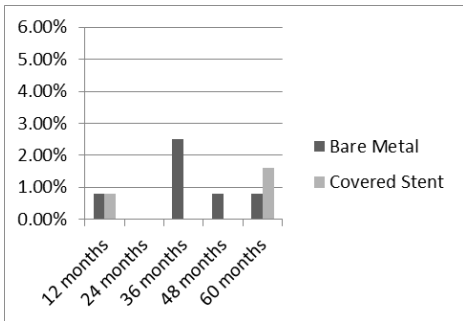
% Stent Fracture (new at each interval)		
Interval	COAST I	COAST II
12 months	4/121 (3.3%)	1/127 (0.8%)
24 months	12/121 (9.9%)	5/127 (3.9%)
36 months	2/121 (1.6%)	1/127 (0.8%)
48 months	10/121 (8.2%)	4/127 (3.1%)
60 months	9/121 (7.4%)	2/127 (1.6%)

A.2. Percent of Patients with Stent Fracture (Cumulative)



% Stent Fracture (cumulative)		
Interval	COAST I	COAST II
12 months	4/121 (3%)	1/127 (0.8%)
24 months	16/121 (13%)	6/127 (4.7%)
36 months	18/121 (15%)	7/127 (5.5%)
48 months	28/121 (23%)	11/127 (8.6%)
60 months	37/121 (31%)	13/127 (10%)

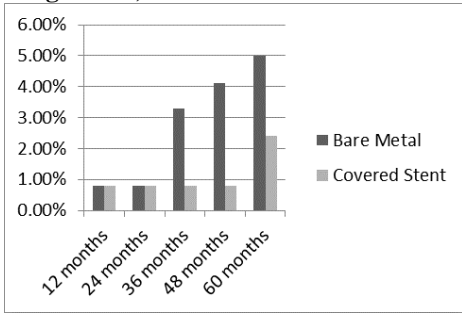
B.1. Percent of Patients with Aortic Wall Injury (New or Progressive)*



% patients with AWI		
Interval	COAST I	COAST II
12 months	1/121 (0.8%)	1/127 (0.8%)
24 months	0/121	0/127
36 months	3/121 (2.5%)	0/127
48 months	1/121 (0.8%)	0/127
60 months	1/121 (0.8%)	2/127 (1.6%)

*All recorded injuries were "new", none designated as progressive

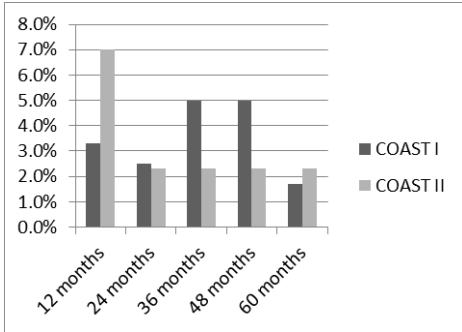
B.2. Cumulative Percent of Patients with Aortic Wall Injury (New or Progressive)*



% patients with AWI (cumulative)		
Interval	COAST I	COAST II
12 months	1/121 (0.8%)	1/127 (0.8%)
24 months	1/121 (0.8%)	1/127 (0.8%)
36 months	4/121 (3.3%)	1/127 (0.8%)
48 months	5/121 (4.1%)	1/127 (0.8%)
60 months	6/121 (5%)	3/127 (2.4%)

*All recorded injuries were “new”, none designated as progressive

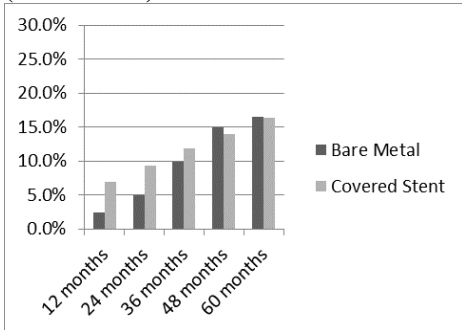
C.1. Percent of Patients with Coarctation Related Re-intervention or Surgery*



% patients with reintervention or surgery		
Interval	COAST I	COAST II
12 months	4/121 (3.3%)	9/128 (7%)
24 months	3/121 (2.5%)	3/128 (2.3%)
36 months	6/121 (5%)	3/128 (2.3%)
48 months	6/121 (5%)	3/128 (2.3%)
60 months	2/121 (1.7%)	3/128 (2.3%)

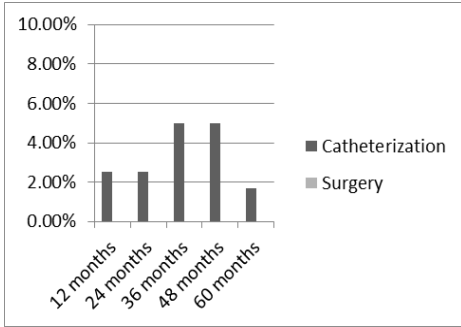
*All patients listed had catheter reinterventions, none had surgery

C.2. Percent of Patients with Coarctation Related Re-intervention or Surgery (Cumulative)



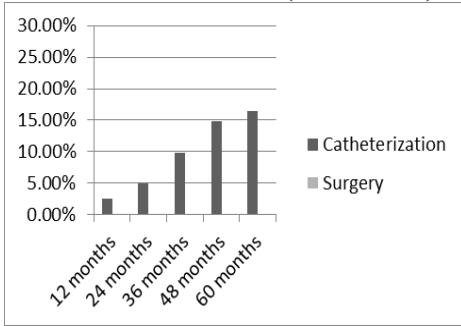
% patients with catheter-based re-intervention or surgery (cumulative)		
Interval	Bare Metal	Covered Stent
12 months	3/121 (2.5%)	9/128 (7%)
24 months	6/121 (5%)	12/128 (9.3%)
36 months	12/121 (9.9%)	15/128 (11.8%)
48 months	18/121 (14.9%)	18/128 (14%)
60 months	20/121 (16.5%)	21/128 (16.4%)

C.3. Percent of Bare Metal Patients with Catheter-Based or Surgical Coarctation-Related Re-intervention



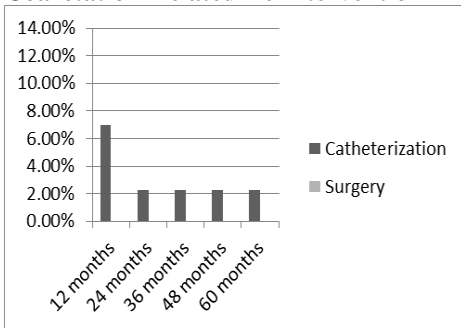
% Bare Metal patients with catheter-based re-intervention or surgery		
Interval	Catheterization	Surgery
12 months	3/121 (2.5%)	0 (0%)
24 months	3/121 (2.5%)	0 (0%)
36 months	6/121 (5%)	0 (0%)
48 months	6/121 (5%)	0 (0%)
60 months	2/121 (1.7%)	0 (0%)

C.4. Percent of Bare Metal Patients with Catheter-Based or Surgical Coarctation-Related Re-intervention (Cumulative)



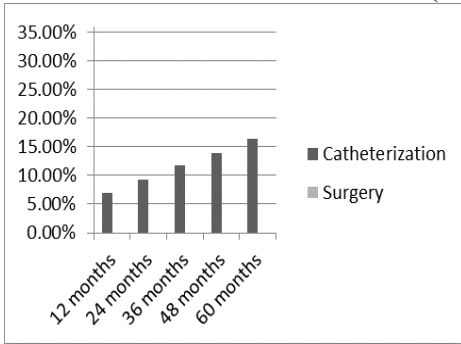
% Bare Metal patients with catheter-based re-intervention or surgery (cumulative)		
Interval	Catheterization	Surgery
12 months	3/121 (2.5%)	0 (0%)
24 months	6/121 (5%)	0 (0%)
36 months	12/121 (9.9%)	0 (0%)
48 months	18/121 (14.9%)	0 (0%)
60 months	20/121 (16.5%)	0 (0%)

C.5. Percent of Covered Stent Patients with Catheter-Based or Surgical Coarctation-Related Re-intervention



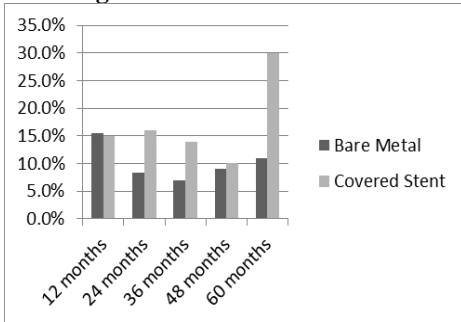
% Covered Stent patients with re-intervention or surgery		
Interval	Catheterization	Surgery
12 months	9/128 (7%)	0 (0%)
24 months	3/128 (2.3%)	0 (0%)
36 months	3/128 (2.3%)	0 (0%)
48 months	3/128 (2.3%)	0 (0%)
60 months	3/128 (2.3%)	0 (0%)

C.6. Percent of Covered Stent Patients with Catheter-Based or Surgical Coarctation-Related Re-intervention (Cumulative)



% Covered Stent patients with re-intervention or surgery (cumulative)		
Interval	Catheterization	Surgery
12 months	9/128 (7%)	0 (0%)
24 months	12/128 (9.3%)	0 (0%)
36 months	15/128 (11.8%)	0 (0%)
48 months	18/128 (14%)	0 (0%)
60 months	21/128 (16.4%)	0 (0%)

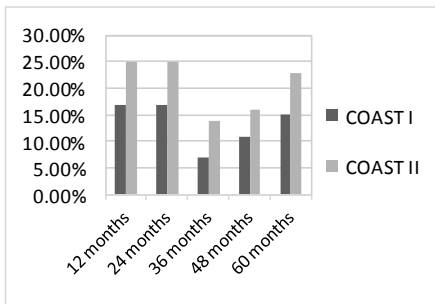
D.1 Percent of Patients with Upper to Lower Extremity Pressure Gradients > 15mmHg



% patients with Residual UE to LE pressure gradient > 15mmHg		
Interval	COAST I	COAST II
12 months	16/104 (15.4%)	16/107 (15%)
24 months	8/95 (8.4%)	13/81 (16%)
36 months	6/81 (7%)	12/72 (14%)
48 months	6/67 (9%)	6/53 (10%)
60 months	7/65 (11%)	14/47 (30%)

Note, n is different at each time interval and based on the number of patients with pressures measured at each interval

E.1. Percent of Patients with Proximal SBP >140



% patients with UESBP > 140mmHg		
Interval	COAST I	COAST II
12 months	18/104 (17%)	26/104 (25%)
24 months	16/95 (17%)	20/81 (25%)
36 months	6/86 (7%)	12/88 (14%)
48 months	8/74 (11%)	10/64 (16%)
60 months	11/74 (15%)	12/52 (23%)

Note, n is different at each time interval and based on the number of patients with pressures measured at each interval

F.1 Baseline Characteristics

Baseline Characteristics – COAST/COAST II Median (Range)		
	Bare Metal Patients (n=128)	Bare Metal Re-intervention Patients (n= 20)
Age (yrs)	16 (8 to 52)	13 (9 to 20)
Weight (kg)	65 (35 to 157)	51.7 (35 to 104)
	Covered Stent Patients (n=127)	Covered Stent Re-intervention Patients (n=21)
Age (yrs)	19 (6 to 67)	15 (6 to 35)
Weight (kg)	68 (17 to 122)	50 (17 to 95)

G.1 Systolic Blood Pressure Differences after Initial CoA Stenting

Systolic Blood Pressure Differences after Initial CoA Stenting Median (Range)		
	Bare Metal <u>Non</u> -Re-intervention Patients (n=108)	Bare Metal Re-intervention Patients (n=20)
SBP difference (AAo-Dao) (mmHg)	0 (-12 to 15)	1.5 (-5 to 12)
	Covered Stent <u>Non</u> -Re-intervention Patients (n=106)	Covered Stent Re-intervention Patients (n=21)
SBP difference (AAo-Dao) (mmHg)	2 (-12 to 38)	7 (-3 to 20)

H.1 Stent Diameter Measurements after Initial CoA Stenting

Stent Measurements after Initial CoA Stenting Median (Range)		
	Bare Metal No Re-intervention or only AWI-related Re-intervention Patients (n=111)	Bare Stent Non-AWI Related Re-intervention Patients (n=17)
Minimum Stent Diameter (mm)	14.4 (7.8 to 20.8)	11.7 (8.6 to 16)
Maximum Stent Diameter (mm)	16.5 (9.2 to 22.5)	13.5 (9.2 to 19.4)
	Covered Stent No Re-intervention or only AWI-related Re-intervention Patients (n=110)	Covered Stent Non-AWI Related Re-intervention Patients (n=17)
Minimum Stent Diameter (mm)	14.8 (9 to 23)	11.5 (7.8 to 16.5)
Maximum Stent Diameter (mm)	17 (11 to 25.7)	13.2 (9.2 to 18)

I.1 Upper Extremity Systolic Blood Pressures

	Number (Percent) or Median (Range) and Mean \pm Standard Deviation	
	Upper Extremity Systolic Blood Pressures at 4 years	
Bare Metal Patients	Upper and Lower Extremity SBP measured	Only Upper Extremity SBP measured
Upper Extremity Systolic Blood Pressure (mmHg) (n=67,7) Median (range) Mean \pm standard deviation	123 (79 to 231) 125 \pm 19	120 (70 to 134) 113 \pm 21
Covered Stent Patients		
Upper Extremity Systolic Blood Pressure (mmHg) (n=59,5) Median (range) Mean \pm standard deviation	126 (93 to 174) 126 \pm 15	124 (110 to 140) 123 \pm 11
	Upper Extremity Systolic Blood Pressures at 5 years	
Bare Metal Patients	Upper and Lower Extremity SBP measured	Only Upper Extremity SBP measured
Upper Extremity Systolic Blood Pressure (mmHg) (n=65,9) Median (range) Mean \pm standard deviation	128 (106 to 165) 129 \pm 12	117 (100 to 160) 121 \pm 19
Covered Stent Patients		
Upper Extremity Systolic Blood Pressure (mmHg) (n=47,5) Median (range) Mean \pm standard deviation	131 (101 to 159) 129 \pm 14	122 (121 to 134) 126 \pm 6

RIGHT VENTRICULAR OUTFLOW TRACT INDICATION

Treatment of right ventricle to pulmonary artery (right ventricular outflow tract) conduit disruptions that are identified during conduit pre-dilatation procedures performed in preparation for transcatheter pulmonary valve replacement (TPVR).

CONTRAINDICATIONS

- Patients too small to allow safe delivery of the stent without injury to a systemic vein or to the right side of the heart;
- Clinical or biological signs of infection;
- Active endocarditis;
- Pregnancy.

WARNINGS

- During the Premarket Approval study the Medtronic Melody Valve was used for valve restoration.
- The safety and effectiveness of the Covered CP Stent for pre-stenting of the right ventricular outflow tract (RVOT) landing zone (i.e., prophylaxis or prevention of either RVOT conduit rupture or TPVR fracture; used as a primary RVOT conduit) in preparation of a transcatheter pulmonary valve replacement (TPVR) has not been evaluated.
- Radiofrequency heating during MRI scans on overlapped, 10 zig CP Stents has not been evaluated.
- As with any type of implant, infection secondary to contamination of the stent might lead to endocarditis, or abscess formation.
- The Covered Stent can migrate from the site of implant potentially causing obstruction to pulmonary artery flow.
- Over-stretching of the RVOT may result in rupture or aneurysm of the RV-PA conduit or the native pulmonary artery.
- The inflated diameter of the stent should at least equal the diameter of the intended implant site.
- When the stent is crimped onto a balloon delivery catheter, the maximum balloon inflation pressure must not exceed the recommended inflation pressure specified in the manufacturer's instructions.
- Excessive force while crimping may weaken welds of the stent.
- Crimping the 8 zig stent on a balloon catheter smaller than 12mm, and the 10 zig on a balloon catheter smaller than 26mm, may cause damage to the stent.
- Excessive handling and manipulation of the covering while crimping the stent may cause the covering to tear off of the stent.
- Crimping the device in the opposite direction of the folds in the covering may cause the covering to catch while inserting into the hemostasis valve tool and introducer. This could cause the covering to tear off of the stent.
- Pulling the Covered stent back through the introducer and/or hemostasis valve may cause the covering to catch and tear off of the stent.

- This device is intended for single use only. Do not resterilize and/or reuse it, as this can potentially result in compromised device performance and increased risk of cross-contamination.

PRECAUTIONS

- Use of an inflation device with pressure gauge is highly recommended during this procedure.
- The stent is rigid and may make negotiation through vessels difficult.
- Dilatation procedures should be conducted under fluoroscopic guidance with appropriate x-ray equipment.
- The inflation diameter of the balloon used during stent delivery should approximate the diameter of the obstructive vessel and the intended implant site.
- Careful attention must be paid to the maintenance of tight catheter connections and by aspiration before proceeding to avoid air introduction into the system.
- Under no circumstances should any portion of the catheter system be advanced against resistance. The cause of the resistance should be identified with fluoroscopy and action taken to remedy the problem.

POTENTIAL COMPLICATIONS / ADVERSE EFFECTS

NOTE: Circumferential tear of the delivery balloon catheter prior to complete expansion of the stent may cause the balloon to become tethered to the stent, requiring surgical removal. In case of rupture of an adequately sized balloon after stent expansion, it can be withdrawn and a new balloon catheter exchanged over a guidewire to complete expansion of the stent.

Cardiac catheterization carries certain risks. In addition, potential complications, and related adverse effects associated with implants include, but are not limited to:

- | | |
|--|-------------------------|
| • Stent Migration | • Stent Stenosis |
| • Stent Fracture | • Pseudoaneurysm |
| • Vessel Ruptures | • Stent Malposition |
| • Hematoma | • Sepsis/infection |
| • Thrombosis/Thromboembolism | • AV fistula formation |
| • Death | • Transitory arrhythmia |
| • Endocarditis | • Bleeding |
| • Cell necrosis at the site of implant | |
| • Cerebrovascular Incident | |

PARCS CLINICAL STUDY INFORMATION

PARCS was performed to provide information that will support labeling of the Covered CP Stent for the treatment of RV-PA conduit disruption, occurring during cardiac catheterizations aimed at re-dilating the conduit up to 110% of its original size, and then making the conduit competent by the implantation of a transcatheter pulmonary valve. The study was a prospective, multi-center, single arm, non-randomized clinical study trial.

50 patients were included in the pivotal cohort, and 70 patients were included in the continued access cohort.

There were 39 investigational sites.

1. Clinical Inclusion and Exclusion Criteria

a. Precatheterization Inclusion Criteria:

- i. Patient meets institutional criterion for placement of Melody[®] TPV
- ii. Patient size adequate to receive Melody[®] TPV implantation via venous access using the Ensemble[®] Transcatheter Delivery System
- iii. RV-PA conduit original size \geq 16mm diameter
- iv. Patient age between 7 and 75 years

b. Catheterization Inclusion Criteria:

- i. Angiographic evidence for RV-PA conduit disruption including: dissection, aneurysm, pseudo-aneurysm, tears or rupture
 - Recognition and treatment of conduit disruption may occur before, during or after implantation of the Melody[®] TPV
 - Conduit disruption related to prior intervention, identified angiographically before conduit dilation is performed during the Melody[®] implant procedure, can be eligible for CCPS implantation and study inclusion.

c. Precatheterization Exclusion Criteria:

- i. Patient size too small for transvenous placement of the Melody[®] TPV
- ii. Bloodstream infection, including endocarditis
- iii. Pregnancy
- iv. Prisoners and adults lacking the capacity of give consent

d. Catheterization Exclusion Criteria:

- i. Conduit size is not suitable (too small or too large) for a Melody[®] TPV
- ii. Risk of coronary compression has been identified
- iii. Lack of angiographic evidence for RV-PA conduit disruption – **Prophylactic use of study CCPS is prohibited**
- iv. Vessel injury occurring in either the right or left branch pulmonary arteries
 - If injury to branch pulmonary arteries occurs during the catheterization and covered stent usage is indicated, Emergency Use guidelines must be employed.

2. Follow-up Schedule

All patients are scheduled to return for follow-up examinations at 6 months.

3. Clinical Endpoints

With regards to safety, the following criteria were evaluated.

Primary Safety Endpoint #1: Patient must have successful coverage of conduit disruption defined as either no residual disruption or contained disruption, followed by successful implantation of the Melody® valve.

Hypothesis: At least 80% of patients will have successful implantation of the Melody® TPV following repair of the RV-PA conduit to a post-procedure SIS level of 0 or 1, using the Covered CP Stent.

Table 14: Primary Safety Endpoint #1

	Number (Percent)	
	Pivotal Implanted (n=50 ²)	CAP Implanted (n=70 ³)
Patients with Successful Coverage of Conduit Disruption Followed by Successful Implantation of Melody Valve ¹	46 (93.9%)	62 (89.9%)
95% Confidence Interval	(83.1, 98.7)	(80.2, 95.8)

¹ Successful coverage defined as no residual disruption or contained disruption

² Not reported for 1 pivotal patient

³ Not reported for 1 CAP patient

Conclusion: Based on the pivotal cohort, successful implantation of the Melody® valve is achieved in at least 83% of patients, which exceeds the hypothesized value of 80%.

Primary Safety Endpoint #2: Patient must not have any adverse event attributed to the Covered CP Stent within 30 days of the catheterization procedure, as adjudicated by the Data and Safety Monitoring Board.

Hypothesis: At least 80% of patients will be free of an adverse event attributed to the Covered CP Stent within 30 days of the catheterization procedure.

Table 15: Primary Safety Endpoint #2

	Number (Percent)	
	Pivotal Implanted (n=50)	CAP Implanted (n=70)
Patients with Any Adverse Event Attributed to the Covered CP Stent within 30 Days ¹	1 (2.0%)	2 (2.9%)
95% Confidence Interval	(0.1, 10.7)	(0.4, 9.9)

¹ Two adverse events attributed to CCPS in 1 pivotal patient (stent malposition, embolization)

Conclusion: Based on the pivotal cohort, at least 80% of patients were free of an adverse event attributed to the CCPS within 30 days of the catheterization procedure.

With regards to effectiveness, the following criteria were evaluated.

Primary Effectiveness Endpoint #1: Improvement in the Severity of Illness Score (SIS) is defined as pre-implantation SIS minus post-procedure SIS assessed after Melody Valve insertion (e.g., a change from level 3 at baseline to level 2 post-procedure would represent an improvement of 1 level in SIS).

The scale used for the clinical study was developed by the Principal Investigator.

Table 16: PARCS Severity of Illness Scale (SIS) – Baseline Assessment

Level of Security	Level 0	Level 1	Level 2	Level 3	Level 4
	<p><u>No injury or conduit wall disruption:</u> No contrast seen extending more than 2mm outside of or extravasating (leaking) outside of the longitudinal plane of the vascular lumen. (does not indicate the need for CCPS implantation)</p>	<p><u>Contained disruption:</u> Small collection of contrast seen extending outside of the longitudinal plane of the vascular lumen $\leq \frac{1}{2}$ the diameter of the adjacent conduit, indicating the occurrence of an aneurysm, pseudo-aneurysm or well contained tear. This category can also be used to describe the unlikely occurrence of a dissection with contrast held in a contained space within the conduit lumen.</p>	<p><u>Partially Contained disruption:</u> Large collection of contrast seen outside of the wall of the RV-PA conduit $\geq \frac{1}{2}$ the diameter of the adjacent conduit.</p>	<p><u>Uncontained conduit disruption:</u> Extravasation of contrast into the mediastinum or pleural cavity.</p>	N/A

Table 17: PARCS Severity of Illness Scale (SIS) – Post CCPS Implant Assessment

Level of Security	Level 0	Level 1	Level 2	Level 3	Level 4
	<p><u>No residual disruption:</u> Total occlusion of conduit disruption without contrast seen outside of the longitudinal plane of the vascular lumen.</p>	<p><u>Contained disruption:</u> Small collection of contrast extending outside longitudinal plane of vascular lumen $\leq \frac{1}{2}$ the diameter of the adjacent conduit, c/w persistence of an aneurysm, pseudo-aneurysm or well contained tear. This category describes leak into original or new injury. This category should only be used for disruption judged unlikely to need further intervention or surgery.</p>	<p><u>Partially Contained disruption:</u> Large collection of contrast seen outside the wall of the RV-PA conduit $> \frac{1}{2}$ the diameter of the adjacent conduit.</p>	<p><u>Uncontained conduit disruption:</u> Extravasation of contrast into the mediastinum or pleural cavity (likely to require further intervention or surgery).</p>	<p><u>Emergent conduit rupture:</u> Severe conduit rupture resulting in the immediate need for surgery or resulting in death.</p>

Hypothesis: Patients will demonstrate a median improvement by at least 1 level from baseline to post-procedure on the severity of illness scale.

Table 18: Primary Effectiveness Endpoint #1

Improvement in Severity of Illness Score	Number (Percent)	
	Pivotal Implanted (n=50)	CAP Implanted (n=70)
Improvement in Severity of Illness Score, from Pre-Implantation Baseline to Post-Procedure, Assessed after Melody Valve Insertion ¹		
-1	3 (6)	3 (5)
0	8 (17)	8 (12)
1	31 (66)	47 (71)
2	3 (6)	7 (11)
3	2 (4)	1 (2)

¹ Baseline SIS not reported for 2 CAP patients; post-procedure SIS not reported for 3 pivotal patients and 2 CAP patients

Conclusion: For pivotal patients, there is a median improvement in SIS of 1 level (p<0.001, Wilcoxon signed-rank test).

Primary Effectiveness Endpoint #2: Procedure Success – defined as device and lesion success with the Covered CP Stent implantation without intra-procedural or post-catheterization somewhat serious or serious adverse events attributable to CCPS implantation. Procedure success will be determined 6 months after the implantation procedure, enabling inclusion of repeat cardiac catheterization or surgery to repair a pseudoaneurysm or conduit tear related to incomplete repair of the conduit wall disruption.

Hypothesis: The procedure will be successful in at least 75% of patients.

Table 19: Primary Efficacy Endpoint #2

Procedure Success	Number (Percent)	
	Pivotal Implanted (n=50 ¹)	CAP Implanted (n=70 ²)
Both Device and Lesion Success, with No Adverse Event Attributed to the Covered CP Stent	40 (81.6%)	54 (78.3%)
95% Confidence Interval	(68.0, 91.2)	(66.7, 87.3)

¹ Not reported for 1 pivotal patient

² Not reported for 1 CAP patient

Conclusion: Based on the pivotal cohort, procedure success is achieved in at least 68% of patients. This falls short of the hypothesis that procedure success would be achieved in at least 75% of patients.

Secondary Effectiveness Endpoint #1: Device Success – defined as successful implantation of a Covered CP Stent, either providing complete repair of a conduit disruption or placement in preparation for a second Covered stent overlapping in tandem without adverse event.

Table 20: Secondary Effectiveness Endpoint #1

Device Success	Number (Percent)	
	Pivotal Implanted (n=50 ¹)	CAP Implanted (n=70 ²)
Successful Implantation of First CCPS, Either Providing Complete Repair of Conduit Disruption or Placement in Preparation for Overlapping Tandem Stents, with No Adverse Event Attributed to the Covered CP Stent	46 (93.9%)	66 (95.7%)
95% Confidence Interval	(83.1, 98.7)	(87.8, 99.1)

¹ Not reported for 1 pivotal patient

² Not reported for 1 CAP patient

Secondary Effectiveness Endpoint #2: Lesion Success – defined as complete repair of a conduit disruption with a single Covered CP Stent or via planned, tandem covered stent implantations.

Table 21: Secondary Effectiveness Endpoint #2

Lesion Success	Number (Percent)	
	Pivotal Implanted (n=50 ¹)	CAP Implanted (n=70 ²)
Successful Coverage of Conduit Disruption with First CCPS or with Subsequent Planned CCPS	42 (85.7%)	56 (81.2%)
95% Confidence Interval	(72.8, 94.1)	(69.9, 89.6)

¹ Not reported for 1 pivotal patient

² Not reported for 1 CAP patient

50 patients were enrolled in the PARCS pivotal study. Device accountability is detailed in Table 22.

Table 22: PARCS Accountability

PARCS Patients	Possible (N) 100%	6 Month Visit N (%)
Safety Cohort ^{1,2}	50 (100%)	47 (94%)
Effectiveness Cohort ^{1,2}	50 (100%)	45 (90%)

¹ Two pivotal patients (023-102 and 028-101) had CCPS surgically removed after implant. These patients were followed for safety only at the 6-month visit.

² Three pivotal patients have been declared lost to follow-up at the 6-month visit (001-101, 004-102, and 036-102).

Subject Demographics

Table 23 presents subject demographics and baseline characteristics analyzed for the enrolled subjects. The study population consisted of 28 male and 22 female subjects with a mean age of 17 (range 6 to 44 years).

Table 23: PARCS Pivotal Cohort – Patient Characteristics

	Pivotal Trial Number (Percent) or Median (Range) Total (n=50)
Gender	
Male	28 (56%)
Female	22 (44%)
Age, years ¹	17 (6 to 44)
Age Group, years	
<10	5 (4%)
10 to 13	11 (17%)
14 to 17	12 (29%)
18 to 29	18 (28%)
>30	4 (4%)
Weight, kg ²	57.9 (19 to 116)

¹ Patient 021-101 was 6 years old at the time of implant. Inclusion criteria require patients to be at least 7 years old.

² Patient 015-102 was 19 kg and patient 023-204 was 19.3kg at the time of implant. Inclusion criteria require patients to be at least 20 kg.

Summary of Anticipated and Unanticipated Adverse Effects

Adverse events occurring in all patients who met eligibility criteria to receive the Covered CP Stent are included in the tables below.

Table 24: Anticipated and Unanticipated Adverse Effects

Pivotal Cohort Adverse Events (n=50)	Number of Events Degree of Seriousness			Total
	Serious	Somewhat Serious	Not Serious	
<i>Due to CCPS Position:</i>				
Stent embolization	1	0	0	1
Total	1	0	0	1
<i>Due to CCPS Implant Procedure:</i>				
Stent malposition	0	1	0	1
Total	0	1	0	1
<i>Due to Melody TPV Implant Procedure:</i>				
Access site pain	0	0	1	1
Total	0	0	1	1
<i>Due to Pre-existing or Independent Condition or Unknown:</i>				
Fever	0	0	1	1
Left flank pain	0	0	1	1
Non-sustained tachycardia	0	0	1	1
Post procedural vomiting	0	0	1	1
Total	0	0	4	4

CP Stent™ 8 Zig Foreshortening Chart

Inflated Balloon Diameter	CP8Z16 (Stent length after expansion) Percentage Shortening	CP8Z22 (Stent length after expansion) Percentage Shortening	CP8Z28 (Stent length after expansion) Percentage Shortening	CP8Z34 (Stent length after expansion) Percentage Shortening	CP8Z39 (Stent length after expansion) Percentage Shortening
12mm	(1.61) cm 2.8%	(2.18) cm 0.8%	(2.62) cm 4.4%	(3.23) cm 3.1%	(3.72) cm 1.9%
14mm	(1.54) cm 6.5%	(2.08) cm 5.4%	(2.56) cm 6.8%	(3.15) cm 5.4%	(3.66) cm 3.6%
15mm	(1.51) cm 8.5%	(2.02) cm 7.9%	(2.51) cm 8.6%	(3.10) cm 7.0%	(3.54) cm 6.6%
16mm	(1.48) cm 10.6%	(1.98) cm 10.1%	(2.45) cm 10.7%	(3.00) cm 9.8%	(3.48) cm 8.2%
18mm	(1.43) cm 13.7%	(1.89) cm 14.0%	(2.38) cm 13.3%	(2.88) cm 13.5%	(3.20) cm 15.6%
20mm	(1.32) cm 20.0%	(1.80) cm 17.9%	(2.30) cm 16.3%	(2.63) cm 20.9%	(2.96) cm 21.9%
22mm	(1.23) cm 25.4%	(1.67) cm 23.9%	(2.09) cm 24.0%	(2.46) cm 26.0%	(2.85) cm 25.0%
24mm	(1.05) cm 36.4%	(1.46) cm 33.8%	(1.91) cm 30.3%	(2.07) cm 37.9%	(2.27) cm 40.1%

Inflated Balloon Diameter	CP8Z45 (Stent length after expansion) Percentage Shortening	CP8Z50 (Stent length after expansion) Percentage Shortening	CP8Z55 (Stent length after expansion) Percentage Shortening	CP8Z60 (Stent length after expansion) Percentage Shortening
12mm	(4.17) cm 3.8%	(4.71) cm 6.2%	(5.25) cm 5.0%	(5.84) cm 4.5%
14mm	(3.97) cm 8.4%	(4.58) cm 8.7%	(5.11) cm 7.6%	(5.67) cm 7.3%
15mm	(3.94) cm 9.2%	(4.50) cm 10.3%	(4.98) cm 10.0%	(5.55) cm 9.2%
16mm	(3.84) cm 11.4%	(4.42) cm 11.9%	(4.91) cm 11.2%	(5.43) cm 11.2%
18mm	(3.71) cm 14.5%	(4.21) cm 16.1%	(4.70) cm 15.1%	(5.20) cm 14.9%
20mm	(3.27) cm 24.7%	(3.96) cm 21.0%	(4.43) cm 20.0%	(4.92) cm 19.5%
22mm	(3.15) cm 27.3%	(3.71) cm 26.0%	(4.09) cm 26.1%	(4.55) cm 25.5%
24mm	(2.83) cm 34.9%	(3.33) cm 33.5%	(3.72) cm 32.8%	(4.14) cm 32.3%

CP Stent™ 10 Zig Foreshortening Chart

Inflated Balloon Diameter	CP10Z39 (Stent length after expansion) Percentage Shortening	CP10Z45 (Stent length after expansion) Percentage Shortening	CP10Z50 (Stent length after expansion) Percentage Shortening	CP10Z55 (Stent length after expansion) Percentage Shortening	CP10Z60 (Stent length after expansion) Percentage Shortening
26mm	(3.17) cm 18.33%	(3.44) cm 22.09%	(4.10) cm 17.34%	(4.24) cm 23.32%	(4.85) cm 20.20%
28mm	(2.96) cm 23.68%	(3.24) cm 26.75%	(3.71) cm 25.11%	(4.00) cm 27.58%	(4.39) cm 27.87%
30mm	(2.58) cm 33.45%	(3.09) cm 30.16%	(3.26) cm 34.34%	(3.64) cm 34.17%	(4.11) cm 32.55%

CP Stent™ 8 Zig Balloon Sizing Chart

Inner Balloon Pressure (atm)	Stent ID (mm)							
	12mm Diameter RBP = 7.0	14mm Diameter RBP = 6.0	15mm Diameter RBP = 5.0	16mm Diameter RBP = 5.0	18mm Diameter RBP = 4.0	20mm Diameter RBP = 4.0	22mm Diameter RBP = 3.0	24mm Diameter RBP = 3.0
1.0	2.75	3.22	3.49	3.75	3.94	4.02	4.20	4.28
2.0	2.85	3.32	3.59	3.85	4.36	4.13	4.33	4.50
3.0	5.85	6.91	6.89	7.79	8.54	9.20	10.16	10.57
4.0	6.12	7.00	7.02	7.95	8.71	9.63	10.40	11.08
4.5							10.84	11.94
5.0	6.20	7.08	7.10	8.04	8.91	10.00		
Outer Balloon Pressure (atm)								
1.0	10.73	13.08	13.45	14.87	16.85	17.91	20.52	22.79
2.0	10.86	13.27	14.16	15.10	17.06	18.38	21.46	23.95
3.0	11.15	13.50	14.55	15.68	17.64	19.42	21.98	24.68
4.0	11.33	13.68	14.88	15.93	18.06	20.07		
5.0	11.62	13.87	15.06	16.19				
6.0	11.80	13.98						
7.0	12.04							

*This data is based on testing performed using the NuMED BIB® Stent Placement Catheter.

The figures in bold face represent the stent ID @ Rated Burst Pressure.

CP Stent™ 10 Zig Balloon Sizing Chart

Inner Balloon Pressure (atm)	Stent ID (mm)		
	26mm Diameter RBP = 3.0	28mm Diameter RBP = 2.0	30mm Diameter RBP = 2.0
1.0	10.25	10.94	11.96
2.0	10.77	11.39	12.42
3.0	11.27	11.87	12.89
4.0	12.05	12.97	13.81
Outer Balloon Pressure (atm)			
0.5		22.85	24.84
1.0	21.62	23.87	25.80
1.5		24.87	26.81
2.0	23.34	27.44	29.94
3.0	25.44		

*This data is based on testing performed using the NuMED BIB® Stent Placement Catheter.

The figures in bold face represent the stent ID @ Rated Burst Pressure.

FOR ALL NUMED CATHETERS AN INFLATION DEVICE WITH PRESSURE GAUGE SHOULD BE USED.

CP Stent 8 ZIG

BIB DELIVERY CATHETER BALLOON DIAMETER AND INTRODUCER SIZE	REQUIRED INTRODUCER WITH BARE CP STENT	REQUIRED INTRODUCER WITH COVERED CP STENT
12MM (8F)	10F	12F
14MM (8F)	10F	12F
15MM (9F)	11F	12F
16MM (9F)	11F	12F
18MM (10F)	11F	14F
20MM (10F)	12F	14F
22MM (11F)	12F	14F
24MM (11F)	12F	14F

CP Stent 10 ZIG

BIB DELIVERY CATHETER BALLOON DIAMETER AND INTRODUCER SIZE	REQUIRED INTRODUCER WITH COVERED CP STENT
26MM (16F)	16F
28MM (16F)	18F
30MM (16F)	18F

RETURN OF EXPLANTED DEVICE:

NuMED, Inc. is interested in obtaining recovered CP Stents. Place the explanted device in a container or vial immediately after excision. For further instructions on the return of an explanted device, contact the RA Manager, NuMED, Inc. 2880 Main Street, Hopkinton, New York, 12965. Phone number: 315-328-4491.








WARNING:

NuMED stents are placed in the extremely hostile environment of the human body. Stents may fail to function for a variety of causes including, but not limited to, medical complications or failure of stent by fracture and embolization. In addition, despite the exercise of all due care in design, component selection, manufacture, and testing prior to sale, stents may be easily damaged before, during, or after insertion by improper handling, crimping or other intervening acts. Metal stents placed where there are extrinsic forces of compression, i.e. right ventricular outflow tract, are especially prone to fatigue fracture and embolization and should be avoided.

WARRANTY AND LIMITATIONS

Stents and accessories are sold in an 'as is' condition. The entire risk as to the quality and performance of the stent is with the buyer. NuMED disclaims all warranties, expressed or implied, with respect to catheters and accessories, including but not limited to, any implied warranty of merchantability or fitness for a particular purpose. NuMED shall not be liable to any person for any medical expenses or any direct or consequential damages resulting from the use of any catheter or accessory or caused by any defect, failure, or malfunction of any catheter or accessory, whether a claim for such damages is based upon warranty, contract, tort, or otherwise. No person has any authority to bind NuMED to any representation or warranty with respect to catheters and accessories.

Description of Graphical Symbols

	Use By		Consult Instructions For Use	REF	Catalog Number		Manufacturer
	MR Conditional	MODEL NUMBER	Model Number	LOT	Batch Code	STERILE EO	Sterilized Using Ethylene Oxide
	Keep Away From Sunlight		Temperature Limitation		Do Not Reuse		