

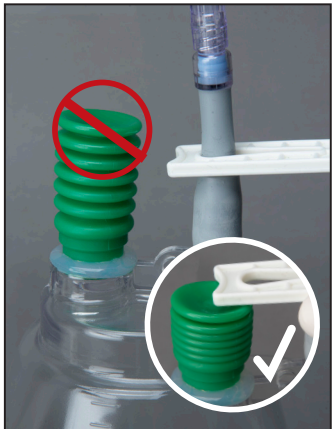
Inpatient Drainage Catheter Procedure

Step-By-Step Guide using ACCEL® Evacuated Drainaged Bottles

The ACCEL® Evacuated Drainage Bottles are vacuum bottles intended for use to aspirate, remove, or sample body fluid. This poster should be used as a guide only. Prior to use, read and refer to the Instructions for Use for detailed directions, warnings, precautions and other important product and procedure related information. Use aseptic technique.



1 Wash your hands and prepare yourself and the patient per hospital protocol. Place on non-sterile gloves. Remove the patient's catheter dressing. If signs of infection are present, do not continue. Contact the physician who placed the catheter.



2 Pick up an ACCEL® drainage bottle and look at the green vacuum indicator. It needs to be in the down position. If it is up, retain the bottle and contact your Medical Device Specialist. Use a new bottle.



3 Remove the clear protective cap on the top of the ACCEL® drainage bottle by screwing counter clockwise.



4 Put on a pair of sterile gloves and create a sterile field by placing one or more sterile towels or a sterile drape onto a clean surface.



5 Have an assistant open up and hand you a sterile ACCEL® Connection Set, a sterile 6" x 8" Self-Adhesive Dressing, (Tegaderm®) a sterile 4"x4" slit foam or gauze non-adhesive catheter pad, six 4" x 4" gauze pads and six alcohol pads. Place all of these items onto your sterile field.



6 Squeeze the pinch clamp on the Connection Set completely to close off the tubing and to prevent fluid flow. Remove only one of the caps of the spin-lock connector. Do not remove the other cap or the paper tabs holding the Connection Set together.



7 Use a sterile alcohol wipe and swab the surface of the luer lock connector on top of the bottle.



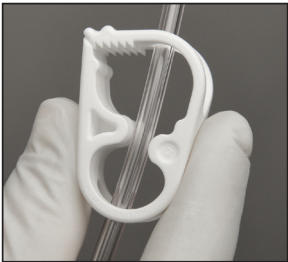
8 Use another sterile alcohol wipe and swab the patient's catheter connection surface.



9 While holding the patient's catheter, use your other hand to connect the open end of the ACCEL® Connection Set to the patient's catheter by pushing down and turning clockwise. Do not insert at an angle or the connection will not be fully locked in place.

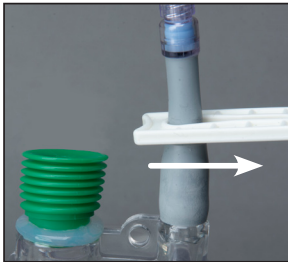


10 Remove the paper tabs that are holding the Connection Set together making sure that the other end of the Connection Set is kept sterile. Now remove the other cap and connect that end of the ACCEL® Connection Set to the luer lock connector on the bottle by pushing down and turning clockwise. Do not insert at an angle or the connection will not fully lock in place.

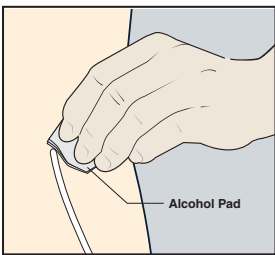


11 Unlock the pinch clamp on the Connection Set.

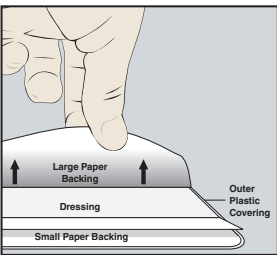
12 Release the white slide clamp on the top of the bottle.



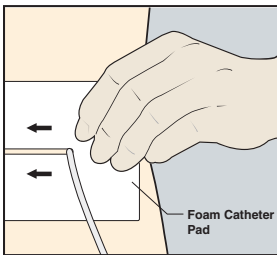
13 Fluid will begin to drain into the bottle. If there is no drainage, there may be an issue with your connections. If so, please see the instructions below. When the flow stops, or the bottle is filled with fluid to the top measuring mark, squeeze the pinch clamp completely closed on the Connection Set. If you need another bottle, please refer to the instructions below. Disconnect the Connection Set hub from the luer lock on the bottle and from the patient's catheter by turning both connector hubs counterclockwise. Secure the fluid from inside the bottle(s) by closing the white slide clamp on the bottle(s). Remove your gloves and discard them. Put on a new pair of sterile gloves. **Warning: Do not drain more than 1,000mL from chest at any one drainage procedure; no more than 2,000mL from abdomen during any 24 hour period.**



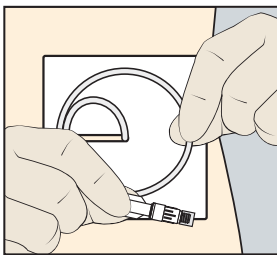
14 Disinfect the area around the catheter with two alcohol pads.



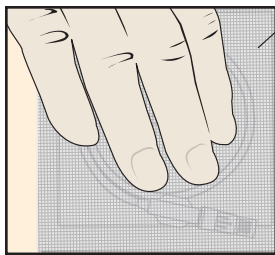
15 Remove the peel away section of the Self-Adhesive Dressing and place it upside down on the sterile field.



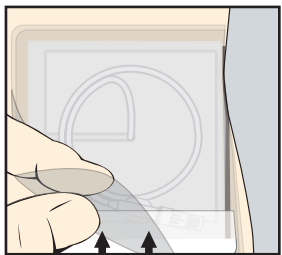
16 Place the fenestrated foam or gauze catheter pad around the catheter.



17 Curl the catheter around in a circle and place it over the foam pad.



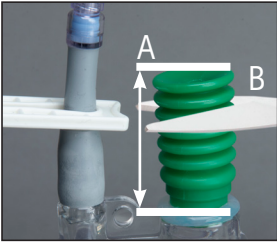
18 Place the two 4"x4" gauze pads on top of the catheter and hold them down.



19 Pick up the Self-Adhesive Dressing and press it down over the gauze pads and remove the outer paper surrounding the edges.

If you require more than one bottle for drainage

1. If you require another bottle for drainage, first make sure that you have completely squeezed the pinch clamp closed on the Connector Set. Now, close the white slide clamp on the full bottle and disconnect the Connection Set from the bottle by turning the connector hub counterclockwise.
2. Pick up another ACCEL® drainage bottle and look at the green vacuum indicator. It needs to be in the down position. If it is up, use a new bottle.
3. Remove the clear protective cap on the top of the ACCEL® drainage bottle by screwing counter clockwise.
4. Use another sterile alcohol wipe and swab the surface of the luer lock connector on top of the bottle.
5. Reconnect the open end of the ACCEL® Connection Set to the luer lock connector on the bottle by pushing down and turning clockwise. Do not insert at an angle or the connection will not fully lock in place.
6. Repeat Steps 11-13 for each additional bottle required.
7. Complete Steps 14-19.



20 Dispose of the bottle(s) per hospital protocol. If your hospital empties the bottle(s) before discarding them: (A) Make sure there is no vacuum in the bottle. The green vacuum indicator should be in the fully expanded position. (B) Cut off the green vacuum indicator. Empty the bottle(s) into the toilet or sink, or according to hospital protocol.

Contact your B. Braun Interventional Systems Medical Device Specialist with any questions.

Rx only

ACCEL is a registered trademark of B. Braun Interventional Systems Inc. Tegaderm is a registered trademark of 3M. ©2020 B. Braun Interventional Systems Inc. CV-2073 Rev. 4/20

Distributed by:

B. Braun Interventional Systems Inc. | Part of the B. Braun Group of Companies
Bethlehem, PA 18018 | USA
Tel 877-836-2228 | Fax 610-849-1334 | www.bisusa.com

Scan link for
ASEPT®
Pleural & Peritoneal
Drainage Products



Watch Instructional
Video by Scanning
the QR Code with
your Smart Phone

